

**BENCHMARK POSITION DESCRIPTION – BM #34  
MINISTRY OF TRANSPORTATION AND INFRASTRUCTURE**

<b>1. POSITION TITLE</b> Manager, Bridge & Structural Engineering	<b>2. CLASSIFICATION LEVEL</b> LSO 5
<b>3. DIVISION</b> Highways	<b>4. BRANCH</b> Southern Interior Region
<b>5. IMMEDIATE SUPERVISOR</b> Regional Manager, Engineering	<b>6. LOCATION</b> Kamloops

<b>Program Function</b>	Describe the purpose of the program and organization in which the position operates.
-------------------------	--

The Regional Bridge and Structural Engineering Program provides for the delivery and management direction of bridge and structural design, inspection and construction, ensures quality management and provides program development and support services for the regional Bridge Program.

<b>Purpose of Position and Summary of its Functions</b>	This may be used for POSTING purposes.
---	--

The position is responsible for directing the provision of bridge and structural engineering services in the region and is responsible for planning, coordinating and overseeing the preparation of designs by in-house or consultant licensed professionals. The Manager provides input into the development of Bridge and Structural Standards, and ensures that bridge and structural construction and repairs, rehabilitation and maintenance work meet those standards.

<b>Organizational Structure and Working Environment</b>	
---	--

The Bridge Engineering Section is one of five reporting to the Regional Manager, Engineering. The Regional Manager reports directly to the Regional Director. The Manager, Bridge and Structural Engineering supervises a staff of licensed and unlicensed professionals. As the Regional Manager has a sizeable span of control, this position functions with considerable independence in the execution of the Regional Bridge Program.

<b>Position's Specific Functions and How They Are Performed</b>	
---	--

- 1. 35% Directs the provision of bridge and structural engineering services by:**
  - Developing five year regional Bridge Betterment and Bridge Rehabilitation Programs including preliminary cost estimates
  - Developing and implementing detailed annual Bridge Maintenance Plans and Bridge Rehabilitation Plans
  - Developing a seismic retrofit program
  - Developing bridge inspection schedules for all bridges within the region
  - Reviewing, and approving or rejecting design proposals on complex bridge rehabilitations, modifications and/or additions
  - Planning, coordinating and overseeing the preparation of designs for emergency bridge repairs required as the result of accidents and/or material failures
  - Directing internal/external licensed professional engineers
  - Ensuring annual field structural condition assessments conducted by Districts is monitored
  - Prioritizing and distributing work between in-house and private professional consulting groups
  
- 2. 30% Plans, coordinates and oversees the preparation of designs by in-house or consultant licensed professional staff by:**
  - Setting out the deliverables, specifications and all design requirements
  - Overseeing the preparation of, and/or preparing contract documents for tendering
  - Identifying design issues, ordering changes and/or providing direction on revisions to design proposals
  - Reviewing and approving or rejecting design proposals
  - Providing advice and guidance to in house bridge staff
  - Ensuring all design work is performed consistent with Ministry standards and policies

**BENCHMARK POSITION DESCRIPTION – BM #34**  
**MINISTRY OF TRANSPORTATION AND INFRASTRUCTURE**

**3. 15% Provides input into the development of Bridge and Structural Standards and ensures that bridge and structural construction and repairs, rehabilitation and maintenance work meet those standards by:**

- Serving on the Bridge Engineering Branch Standards Committee
- Identifying the need for and developing recommendations for changes to standards based on evaluations of field performance
- Undertaking period reviews of bridge staff work for conformance to standards and overall policy
- Reviewing inspection reports
- Promulgating standards to all regional and contracted licensed professionals engaged in bridge design and construction
- Participating in the development of Ministry inspection standards

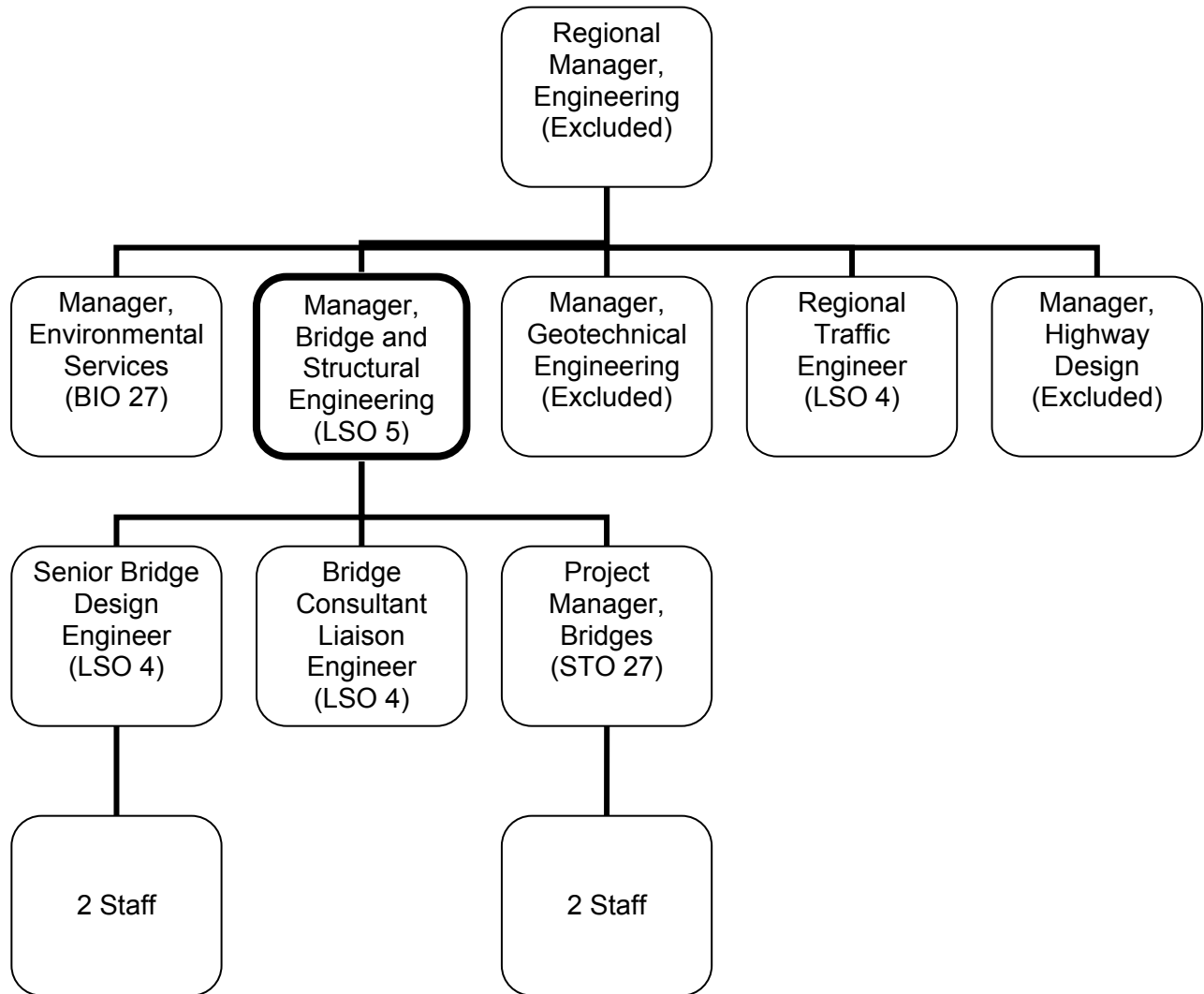
**4. 15% Supervises the Regional Bridge Engineering Section by:**

- Determining section priorities
- Assigning and reviewing work
- Ensuring that staff receive training
- Setting performance plans and conducting performance appraisals

**5. 5% Performs other related duties**

**BENCHMARK POSITION DESCRIPTION – BM #34  
MINISTRY OF TRANSPORTATION AND INFRASTRUCTURE**

**ORGANIZATION CHART – MANAGER, BRIDGE AND STRUCTURAL ENGINEERING**



**BENCHMARK CLASSIFICATION RATIONALE – BM #34  
MINISTRY OF TRANSPORTATION AND INFRASTRUCTURE**

**TITLE: Manager, Bridge & Structural Engineering**

**LEVEL: LSO 5**

**DIVISION/BRANCH: Highways/Southern Interior Region**

FACTOR	POINTS
<p><b><u>PURPOSE OF POSITION</u></b> The primary focus of this position is to lead and direct the provision of bridge and structural engineering services in the Region. The position plans, assigns and oversees the preparation of designs by ministry staff or consultant licensed professionals and provides input into the development of Bridge and Structural Standards and ensures that all work meets those standards.</p> <p><b><u>KNOWLEDGE</u></b> The work requires a deep knowledge of structural engineering with particular emphasis in bridge construction, maintenance and rehabilitation in order to develop and implement detailed annual bridge maintenance and rehabilitation plans and a seismic retro fit program.</p> <p>Requires registration as a Professional Engineer.</p>	F(1)b 150
<p><b><u>JUDGEMENT</u></b> <u>Originality and Complexity:</u> The position functions as the highest level of technical planning in bridge engineering for the region and is responsible for developing and implementing all bridge maintenance, rehabilitation, and seismic retro fit programs, and prioritizing and distributing work between ministry and consultant licensed professionals.</p> <p><u>Technical Supervision Received:</u> While bridge program plans are reviewed upon completion, the position reports to the Regional Manager, Engineering who has responsibility for five distinctly different professional groups and is not required to have as much depth of bridge engineering knowledge as this position.</p>	D3 113
<p><b><u>ORGANIZATION AND PROGRAM ROLE</u></b> The primary role of the position is to provide technical supervision to a group of licensed professional engineers and consultant licensed professionals.</p>	III(b) 50
<p><b><u>ADMINISTRATIVE SUPERVISORY RESPONSIBILITY</u></b> The position administratively supervises a staff of seven ministry licensed professional and technical staff.</p>	5 – 9 6

**TOTAL POINTS 319**

LEVEL	POINT RANGE
1	168 – 203
2	204 – 237
3	238 – 267
4	268 – 295
<u>5</u>	<u>296 – 365</u>