

**BENCHMARK POSITION DESCRIPTION – BM #23  
MINISTRY OF FORESTS AND RANGE**

<b>1. POSITION TITLE</b>	<b>2. CLASSIFICATION LEVEL</b>
Cruising Policy Forester	LSO 4
<b>3. DIVISION</b>	<b>4. BRANCH</b>
Tenure and Revenue	Revenue Branch
<b>5. IMMEDIATE SUPERVISOR</b>	<b>6. LOCATION</b>
Manager, Scaling, Cruising and Waste	Victoria

**Program Function** Describe the purpose of the program and organization in which the position operates.

The branch is responsible for establishing and maintaining policies for the measurement and pricing of standing timber, scaling of harvested timber, and measurement of waste. All elements of the process are critical in determining the amount paid by licensees. The branch is responsible for financial forecasting and reporting on key Crown forests revenue accounting for 600 million dollars annually (2008 dollars).

**Purpose of Position and Summary of its Functions** This may be used for POSTING purposes.

The primary function of this position is to establish and maintain standards, policies and procedures for the cruising of timber offered for sale, or by tenure, that meet the necessary requirements for determining stumpage rates on the quantity, quality and composition of the timber and the factors affecting harvesting and manufacturing costs and product recoveries and values. The position also is responsible for monitoring the performance of cruising, advising on mensurational problems and providing recommendations on cruising policy issues.

**Organizational Structure and Working Environment**

The Cruising Policy Forester is one of five positions reporting to the Manager, Scaling and Cruising who in turn reports to the Director, Revenue Branch. There are two other policy positions in the section, a Scaling Policy Forester and a Log Salvage Policy Forester.

**Position's Specific Functions and How They are Performed**

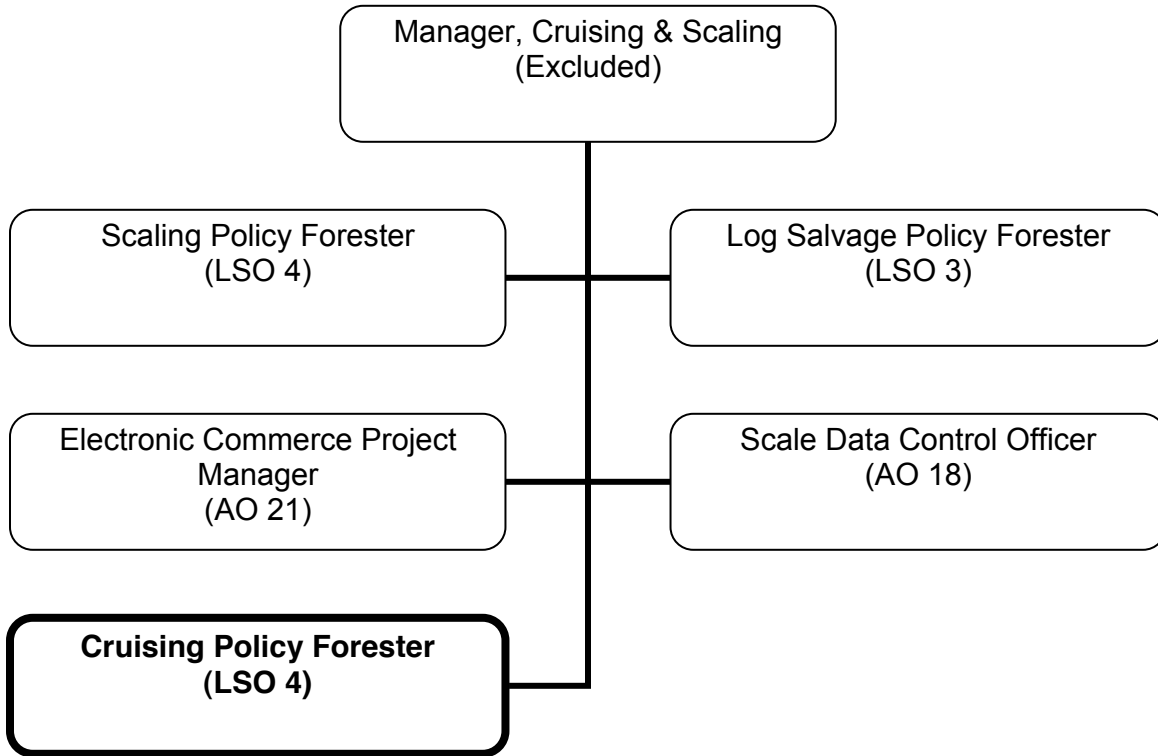
- 1. 40% Develops and prescribes ministry cruising standards, guidelines, systems and procedures for ministry staff, the forest industry and private consultants by:**
  - Identifying in consultation with other ministry staff, the factors to be considered, the most appropriate method of data collection and the mensurational and statistical concepts required to quantify and qualify timber stand and site characteristics
  - Developing and recommending changes to Provincial cruising policies and submitting for executive approval
  - Developing and implementing new methodologies, procedures and forms required as a result of changes in timber pricing and forest management policies
  - Specifying the detail and logic of cruising procedures and data compilation sequences to be programmed
  - Certifying that programs and program changes meet user specifications
  - Giving technical advice to data processing staff
  - Ensuring congruency of data in concert with other branches
  - Maintaining the Provincial Cruising Manual, ensuring that it is technically current, meets appraisal requirements and is compatible with other timber volume data bases and various manuals
  
- 2. 40% Monitors the performance of cruising for the purpose of stumpage appraisal by the ministry and the private sector, advises on mensurational problems at the field level and makes recommendations on cruising policy issues by:**
  - Auditing regional staff for adherence to the Cruising Manual
  - Coordinating cruising activities among regions

**BENCHMARK POSITION DESCRIPTION – BM #23  
MINISTRY OF FORESTS AND RANGE**

- Advising or directing regional staff and private sector personnel on cruising policies and procedures
  - Conducting meetings with regional and district staff
  - Attending meetings with private sector companies and various other stakeholder groups
  - Arranging training for forest service cruising staff
- 3. 15% Designs, supervises, directs and/or carries out studies aimed at improving operational cruising by:**
- Studying current literature and best practices materials
  - Liaising with federal agencies, universities, the ministry's Research Branch and technical schools
  - Working with the Resource Inventory Branch to ensure compatibility between the two functions
- 4. 5% Performs other related duties**

**BENCHMARK POSITION DESCRIPTION – BM #23  
MINISTRY OF FORESTS AND RANGE**

**ORGANIZATION CHART – CRUISING POLICY FORESTER**



**BENCHMARK CLASSIFICATION RATIONALE – BM #23  
MINISTRY OF FORESTS AND RANGE**

**TITLE: Cruising Policy Forester**

**LEVEL: LSO 4**

**DIVISION/BRANCH: Tenure and Revenue/Revenue**

<b>FACTOR</b>	<b>POINTS</b>
<p><b><u>PURPOSE OF POSITION</u></b> The primary focus of this position is to establish and maintain standards, policies and procedures for the cruising of timber offered for sale. This includes identifying factors to be considered, and the most appropriate methods to be used in quantifying and qualifying timber stand and site characteristics.</p> <p><b><u>KNOLWEDGE</u></b> The work requires a broad knowledge of forestry with considerable depth in statistics and forest mensuration to develop provincial cruising policies. The work involves developing cruising standards, and determining the mensurational and statistical concepts to be followed and the most appropriate methods of data collection to be utilized by Ministry staff, the forest industry and consultants. The effect of determining stumpage rates on the quantity, quality and composition of the timber and the factors affecting harvesting and manufacturing costs and product recoveries and values is highly analytical work requiring many judgments based on extensive experience. Requires registration as a Professional Forester.</p>	E(2) 130
<p><b><u>JUDGEMENT</u></b> <u>Originality and Complexity</u> The work involves making major adaptations to previously developed cruising standards and instituting changes in methodology and procedures. As the Ministry's expert on Cruising policy, the position will be required to interpret the fine points of Ministry policy to Ministry staff, the forest industry and licensed professional consultants.</p> <p><u>Technical Supervision Received:</u> The work is subject to a general review or spot check upon completion. The position's supervisor has responsibility for several different technical areas and is not required to have the same depth of knowledge as the topic position.</p>	C3 99
<p><b><u>ORGANIZATION AND PROGRAM ROLE</u></b> The position provides advice, recommendations and consultative services to Ministry staff, the forest industry and professional consultants.</p>	II(a) 43
<p><b><u>ADMINISTRATIVE SUPERVISORY RESPONSIBILITY</u></b> The position does not administratively supervise any staff.</p>	0

TOTAL POINTS 272

LEVEL	POINT RANGE
1	168 – 203
2	204 – 237
3	238 – 267
<b><u>4</u></b>	<b><u>268 – 295</u></b>
5	296 – 365